

LOWER WOOD FARMHOUSE

# Location and Filming Pack.

*A house, a working farm and an estate, in one place.*

LUDLOW · SHROPSHIRE · ENGLAND

5 beds  
SLEEPS 12

4,500  
ESTATE ACRES

Half mile  
PRIVATE DRIVE

8 min  
TO LUDLOW

Lower Wood Farmhouse sits at the end of a half-mile private drive on a 4,500-acre working cattle estate in the Cleve Hills, eight minutes from Ludlow. Period stone interiors, an electric AGA and an original inglenook fire. A farmyard with hens, cattle and oak. Four acres of fenced fields, with the Cleve Hills horizon beyond. The interiors, the working farm and the wider estate sit in one place, with the privacy and quiet to hold a set.

# The looks.

*For the camera. Each item is something the location can dress as.*

---

## **Period stone farmhouse, exteriors and approach**

Front elevation, rear courtyard, a half-mile drive through fields.

---

## **Electric AGA kitchen**

Long oak table, stone floor, west-facing window. Dressed modern or traditional.

---

## **Inglenook sitting room**

Original fireplace with the bread oven still in the wall.

---

## **Five period bedrooms**

Super-king with ensuite, three further doubles, a bunk room. Dressed for drama or domestic.

---

## **Working farmyard**

Cattle, hens, oak, hard standing and machinery in shot or out.

---

## **Fenced fields and Clee Hills horizon**

Four acres on the farm, the wider estate beyond.

---

## **Hot tub by the fields at sunset**

West-facing, golden hour holds for around forty minutes in summer.

---

## **The wider estate**

Gates, drives, woodland, parkland, a lake and period cottages, available by arrangement.

---

# The practicalities.

*For the production. The things that make a shoot day possible.*

## **Half-mile private drive**

No passing traffic, full control of access, gateways closed on shoot days.

---

## **Sound**

No flight path, no road noise, no near neighbours. Quiet enough for dialogue.

---

## **Unit base and parking**

Yard and hard standing for trucks, catering, costume, makeup and generators.

---

## **Power**

Mains throughout the house. Hard standing for a generator if a bigger draw is needed.

---

## **Connectivity**

Fibre broadband and reliable mobile signal across the yard and fields.

---

## **Owner managed, on site**

One point of contact, decisions made on the day, no third-party consents.

---

## **Crew welfare**

Five bedrooms, three bathrooms and two further WCs, kitchen and dining for talent or unit if required.

---

## **Reach**

Eight minutes to Ludlow for crew hotels, fuel, food and an A&E. One hour to Birmingham.

---

# The looks, plainly.

*Twelve shots from the property and the surrounding estate. Higher-resolution images on request.*



THE FARMHOUSE, WIDE



THE FARMHOUSE, FRAMED



THE AGA KITCHEN



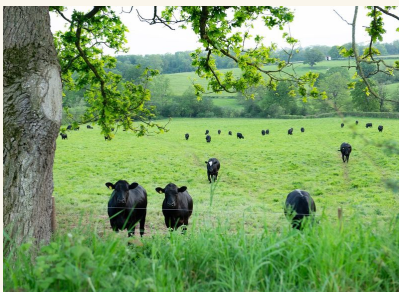
THE INGLENOOK



THE LONG TABLE



THE MASTER BEDROOM



THE WORKING FARM



BIG SKY, FENCED FIELDS



TERRACE, GOLDEN HOUR



HOT TUB, SUNSET



SNUG, FIRE



THE REAR AND YARD

# Quoted per production.

*Each shoot is priced on the brief. Send the dates, the crew size and what the set needs to do.*

---

## Stills and advertising

Half-day and prep-day rates on request.

**On the brief**

---

## Commercial, TV and film

Crew up to thirty, standard build and strike.

**On the brief**

---

## Large crews, features and exclusive use

Multi-day blocks, estate-wide access, overnight talent.

**By arrangement**

---

*Production carries location insurance and signs a location agreement. Recces are welcome and not charged.*

### CONTACT

## Arrange a recce.

*Owner managed. One conversation to a date in the diary.*

#### EMAIL

[stay@lowerwoodfarmhouse.co.uk](mailto:stay@lowerwoodfarmhouse.co.uk)

#### PHONE

+44 1584 534514

#### WEB

[lowerwoodfarmhouse.co.uk/filming](http://lowerwoodfarmhouse.co.uk/filming)